

鹿洲灣  
LUK/CHAU WAN  
鹿洲灣

810100 N

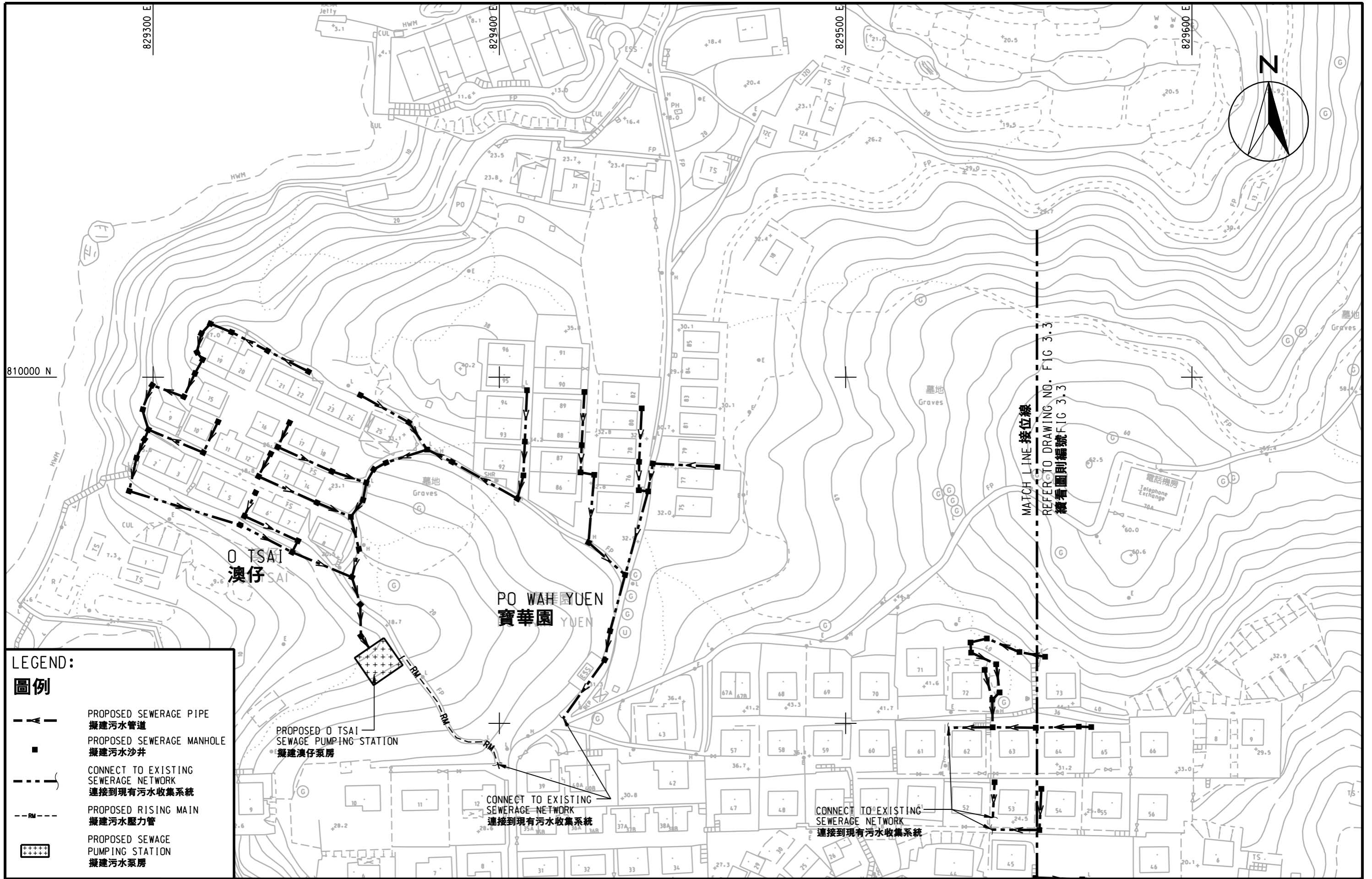
809300 N

DATE: 2012-2-29 10:37:36 WUY

**AECOM**

OUTLYING ISLANDS SEWERAGE STAGE 2 - LAMMA VILLAGE SEWERAGE PHASE 2  
 離島污水收集系統第 2 階段 - 南丫鄉村污水收集系統第 2 期  
 SEWERAGE LAYOUT PLAN (O TSAI, PO WAH YUEN, YUNG SHUE LONG NEW VILLAGE, YUNG SHUE LONG OLD VILLAGE AND TAI PENG)  
 污水收集系統設計圖 (澳仔, 寶華園, 榕樹壟新村, 榕樹壟舊村及大坪)

SCALE	A3 1 : 6000	DATE	MAY 2011
CHECK	-	DRAWN	GHX
JOB No.	60040941	DRAWING No.	FIG 3.1
		REV	-



**LEGEND:**  
**圖例**

- PROPOSED SEWERAGE PIPE  
擬建污水管道
- PROPOSED SEWERAGE MANHOLE  
擬建污水沙井
- CONNECT TO EXISTING SEWERAGE NETWORK  
連接到現有污水收集系統
- PROPOSED RISING MAIN  
擬建污水壓力管
- PROPOSED SEWAGE PUMPING STATION  
擬建污水泵房

OUTLYING ISLANDS SEWERAGE STAGE 2 - LAMMA VILLAGE SEWERAGE PHASE 2  
 離島污水收集系統第 2 階段 - 南丫鄉村污水收集系統第 2 期  
 SEWERAGE LAYOUT PLAN (O TSAI, PO WAH YUEN, YUNG SHUE LONG NEW VILLAGE, YUNG SHUE LONG OLD VILLAGE AND TAI PENG)  
 污水收集系統設計圖 (澳仔, 寶華園, 榕樹壟新村, 榕樹壟舊村及大坪)






SCALE	A3 1 : 1000	DATE	MAY 2011
CHECK	-	DRAWN	GHX
JOB No.	60040941	DRAWING No.	FIG 3.2
		REV	-

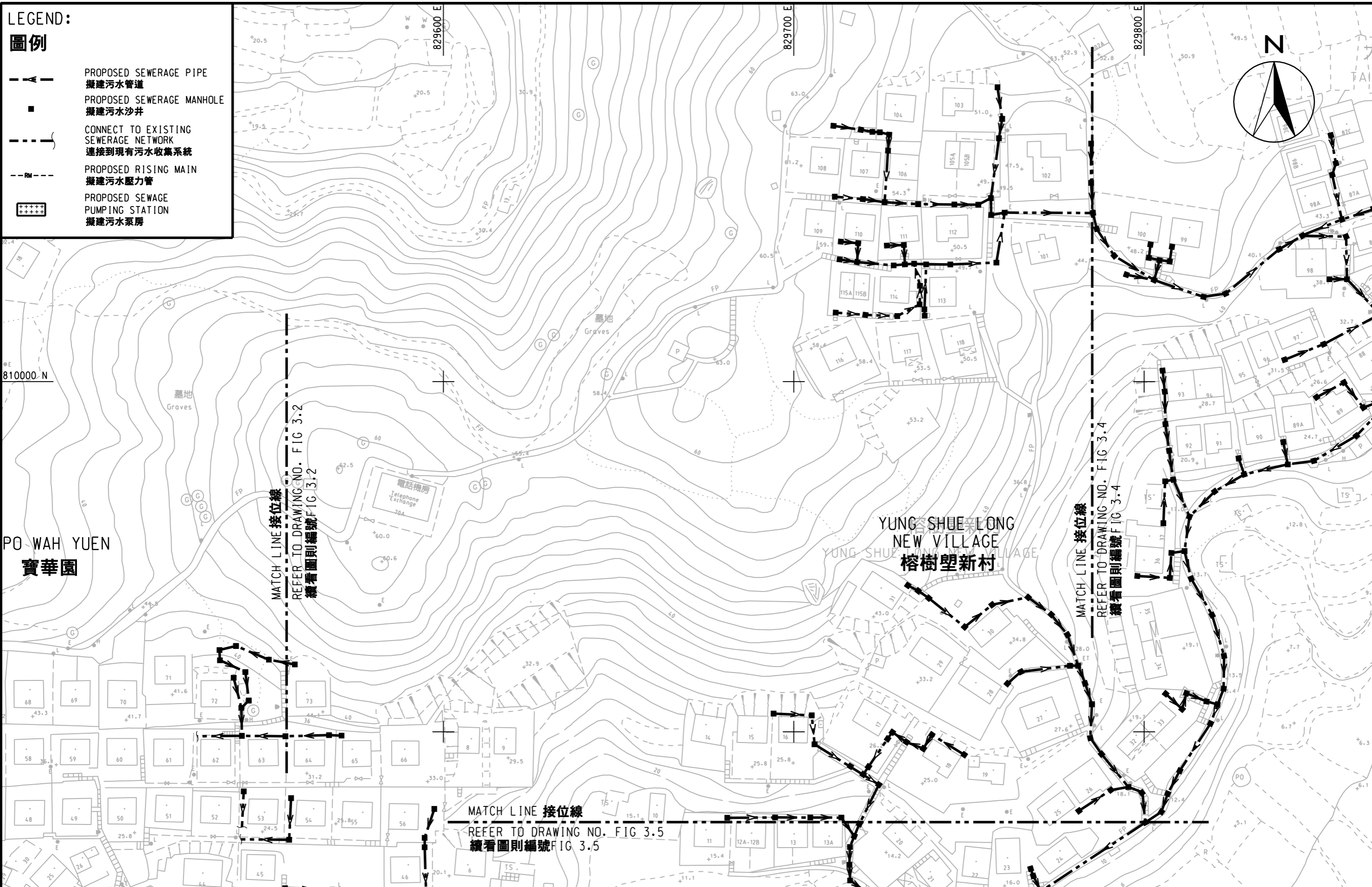


DATE: 2012-2-29 9 21 20 WUYU

LEGEND:

圖例

-  PROPOSED SEWERAGE PIPE  
擬建污水管道
-  PROPOSED SEWERAGE MANHOLE  
擬建污水沙井
-  CONNECT TO EXISTING SEWERAGE NETWORK  
連接到現有污水收集系統
-  PROPOSED RISING MAIN  
擬建污水壓力管
-  PROPOSED SEWAGE PUMPING STATION  
擬建污水泵房



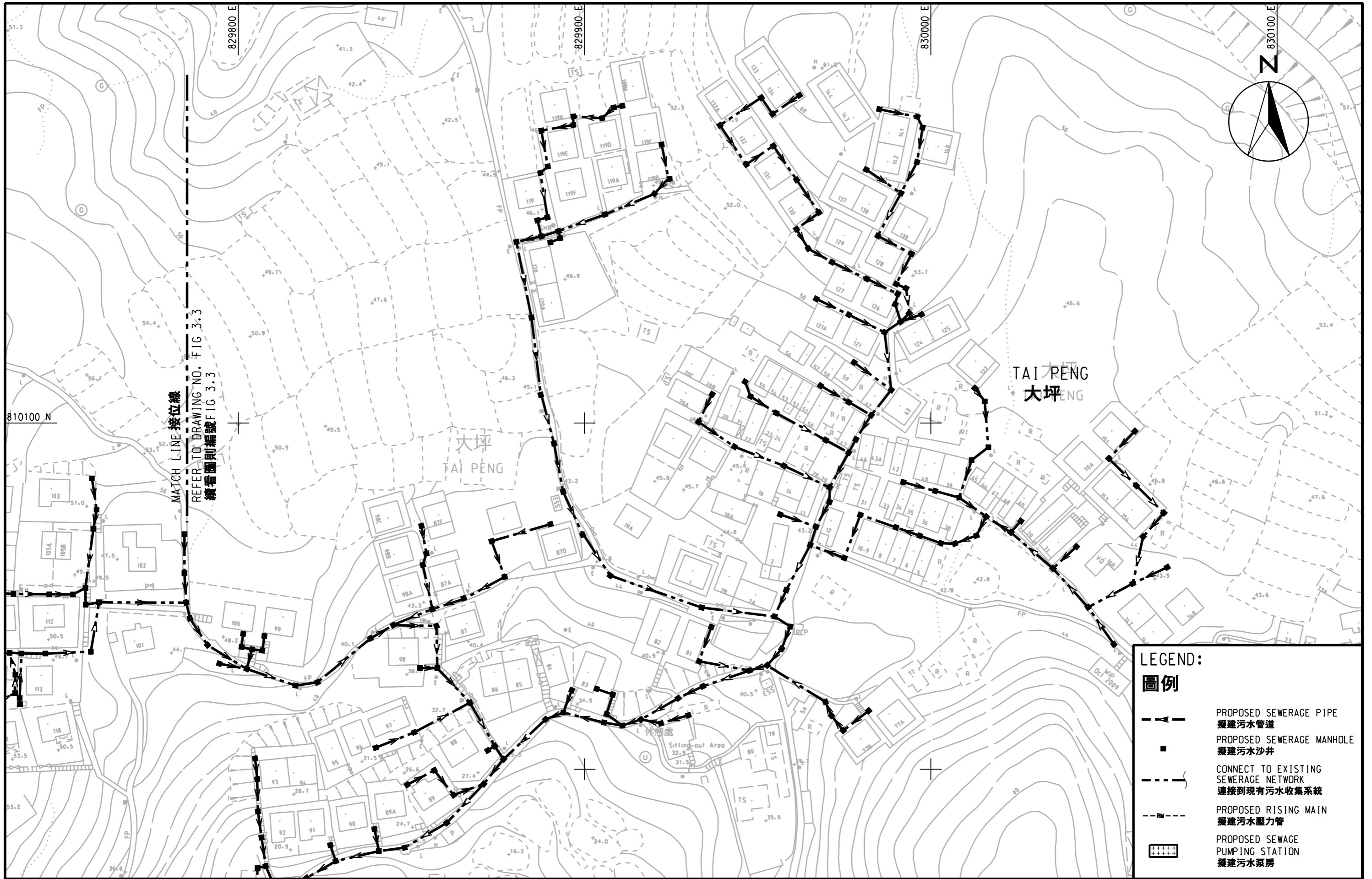
DATE: 2012-2-29 9:23:50 WUY



OUTLYING ISLANDS SEWERAGE STAGE 2 - LAMMA VILLAGE SEWERAGE PHASE 2  
 離島污水收集系統第 2 階段 - 南丫鄉村污水收集系統第 2 期  
 SEWERAGE LAYOUT PLAN (O TSAI, PO WAH YUEN, YUNG SHUE LONG NEW VILLAGE, YUNG SHUE LONG OLD VILLAGE AND TAI PENG)  
 污水收集系統設計圖 (澳仔, 寶華園, 榕樹壟新村, 榕樹壟舊村及大坪)

SHEET 2 OF 4  
全四張, 其二

SCALE	A3 1 : 1000	DATE	MAY 2011
CHECK	-	DRAWN	GHX
JOB No.	60040941	DRAWING No.	FIG 3.3
		REV	-



MATCH LINE 接位線  
 REFER TO DRAWING NO. FIG 3.3  
 續看圖則編號 FIG 3.3

**LEGEND:**  
**圖例**

	PROPOSED SEWERAGE PIPE 擬建污水管道
	PROPOSED SEWERAGE MANHOLE 擬建污水沙井
	CONNECT TO EXISTING SEWERAGE NETWORK 連接到現有污水收集系統
	PROPOSED RISING MAIN 擬建污水壓力管
	PROPOSED SEWAGE PUMPING STATION 擬建污水泵房

OUTLYING ISLANDS SEWERAGE STAGE 2 - LAMMA VILLAGE SEWERAGE PHASE 2  
 離島污水收集系統第 2 階段 - 南丫鄉村污水收集系統第 2 期  
 SEWERAGE LAYOUT PLAN (O TSAI, PO WAH YUEN, YUNG SHUE LONG NEW VILLAGE, YUNG SHUE LONG OLD VILLAGE AND TAI PENG)  
 污水收集系統設計圖 (澳仔, 寶華園, 榕樹壟新村, 榕樹壟舊村及大坪)

SCALE	A3 1 : 1000	DATE	MAY 2011
CHECK	-	DRAWN	GHX
JOB No.	60040941	DRAWING No.	FIG 3.4
		REV	-



DATE: 2012-2-29 9 26 24 WUYU

